



Médilys  
Lons le Saunier

# Collège Hématologie

Lundi 4 décembre - Paris

# Clinique et biologie

## Patient de 45 ans

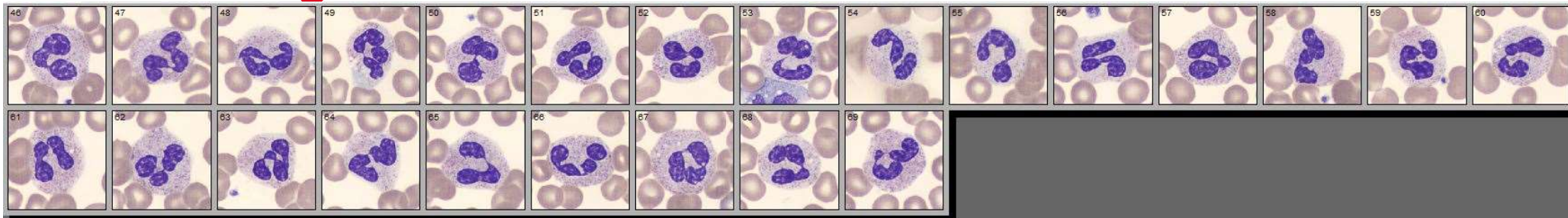
### Tableau de fièvre.

GB	3,07 G/l	PNN	63,3	1,94
GR	5.32 T/l	PNE	2,8	0,09
Hb	16.2 g/dl	Lympho	22,9	0,70
VGM	91,4 fl	Mono	11,0	0,34
Plaq	125 G/l			

CRP 13 mg/l, ASAT 163 UI/l, ALAT 232 UI/l, GGT 266 UI/l



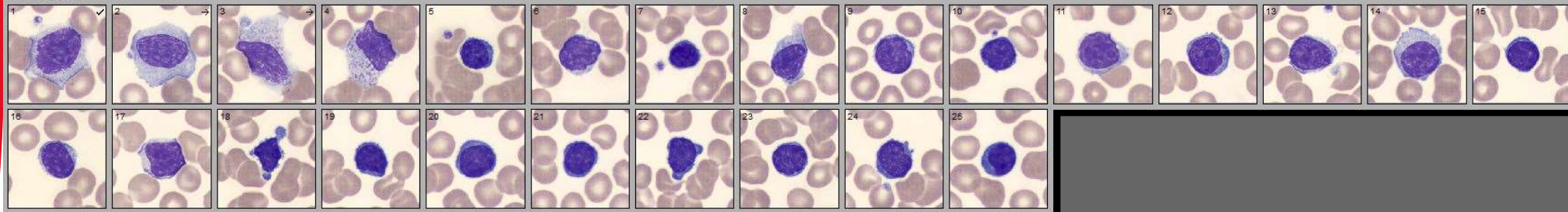
# Hématologie DI



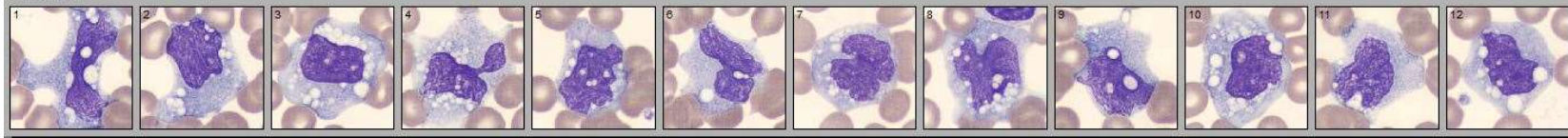
Eosinophile



Lymphocyte

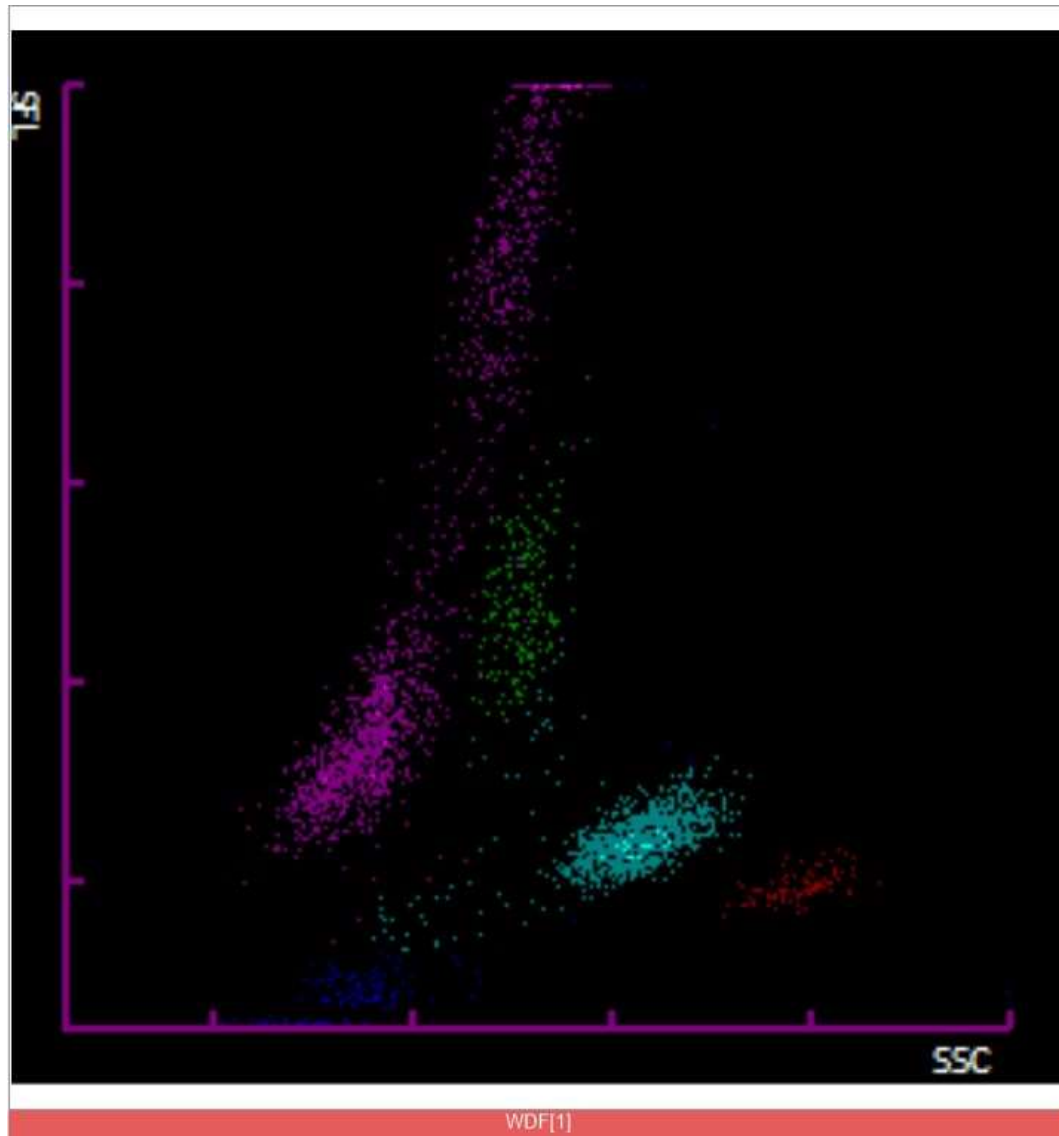


Monocyte



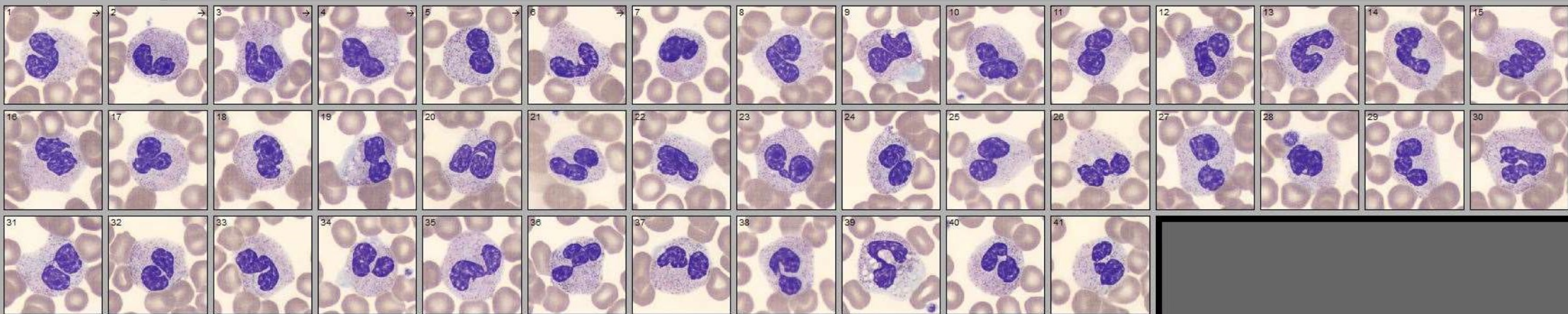
## Bilan du 25/11

	25/11	
GB	2,91	
GR	5,43	
Hb	16,4	
VGM	87,7	
Plaq	114	
PNN	36,3	1,06
PNE	1,8	0,05
Lympho	45,1	1,31
Mono	10,6	0,31
<b>Plasmocytes</b>	<b>6,2</b>	<b>0,18</b>
CRP	3 mg/l	
ASAT	88 UI/l	
ALAT	137 UI/l	

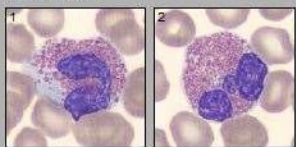




Neutrophile mature

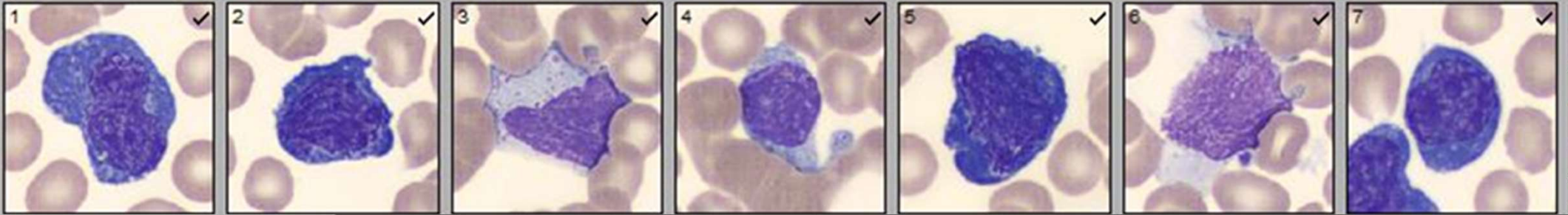


Eosinophile

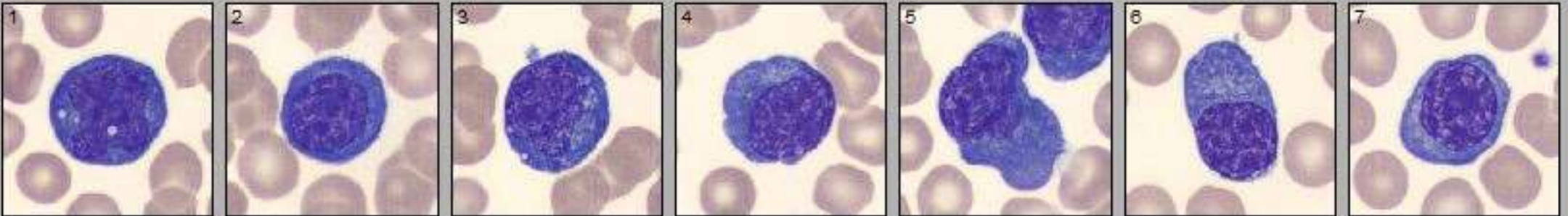


Lymphocyte

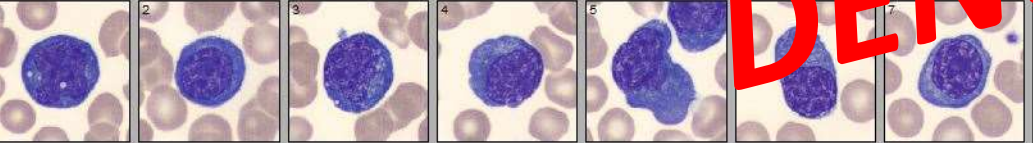
### Lymphocyte



### Plasmocyte



Plasmocyte



**DENGUE**